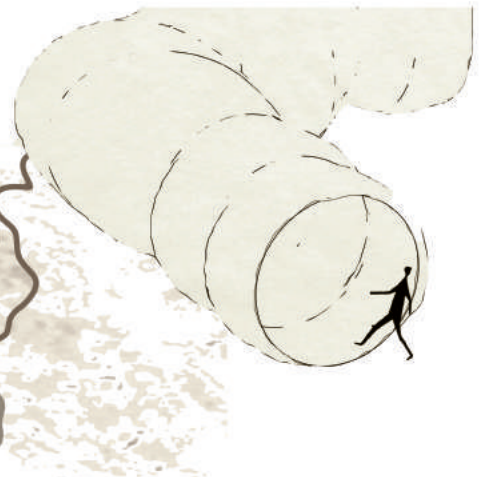


thePASSAGE



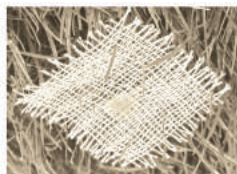
the Passage at the hill

landscape
VS.
ritual

ELEMENTS OF MEDITERRANEAN NETWORK: HYBRID LANDSCAPES

white veils to protect the Hacetevi experience from the landscape but at the same time still not leave the nature and to feel like be a part of it.

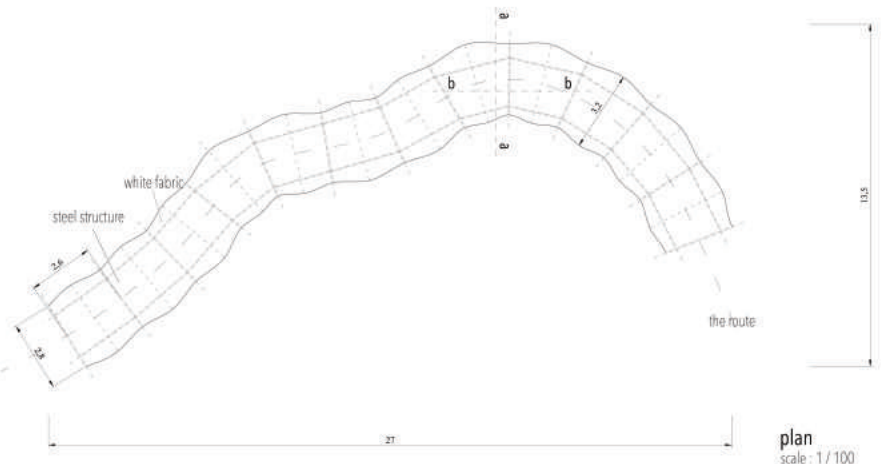
Christo & Jeanne-Claude, *Running Fence*



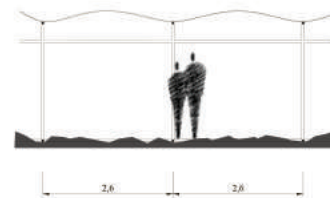
solar fabrics for night illumination and gathering of interest

Science Mag,

<https://science.sciencemag.org/content/344/6187/985.3>

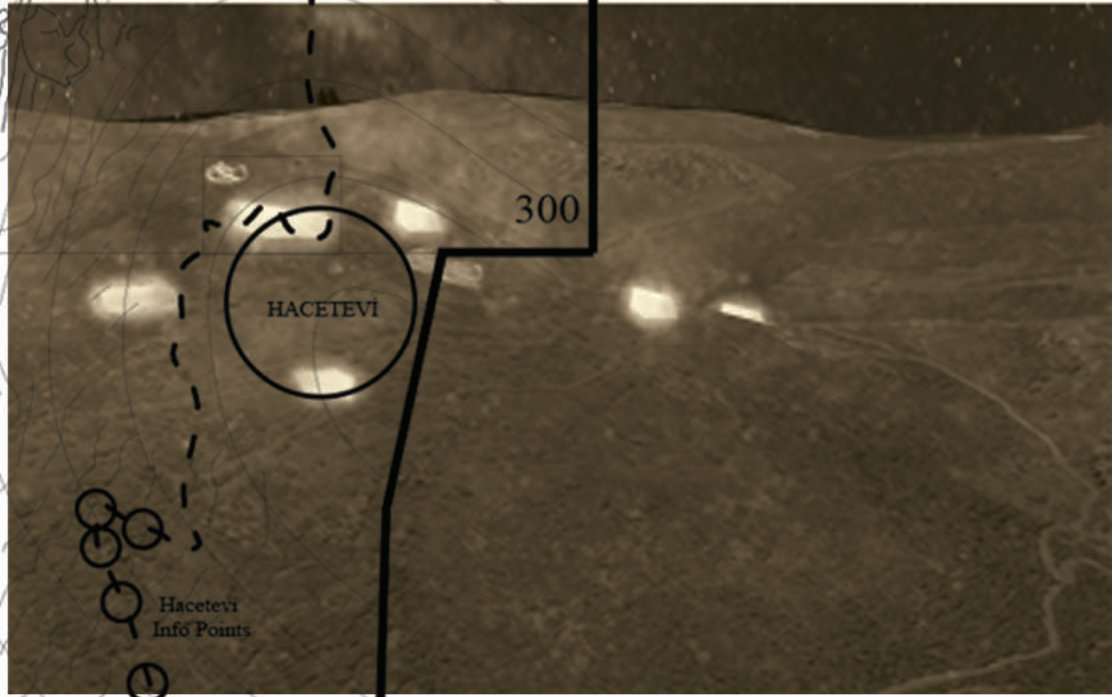
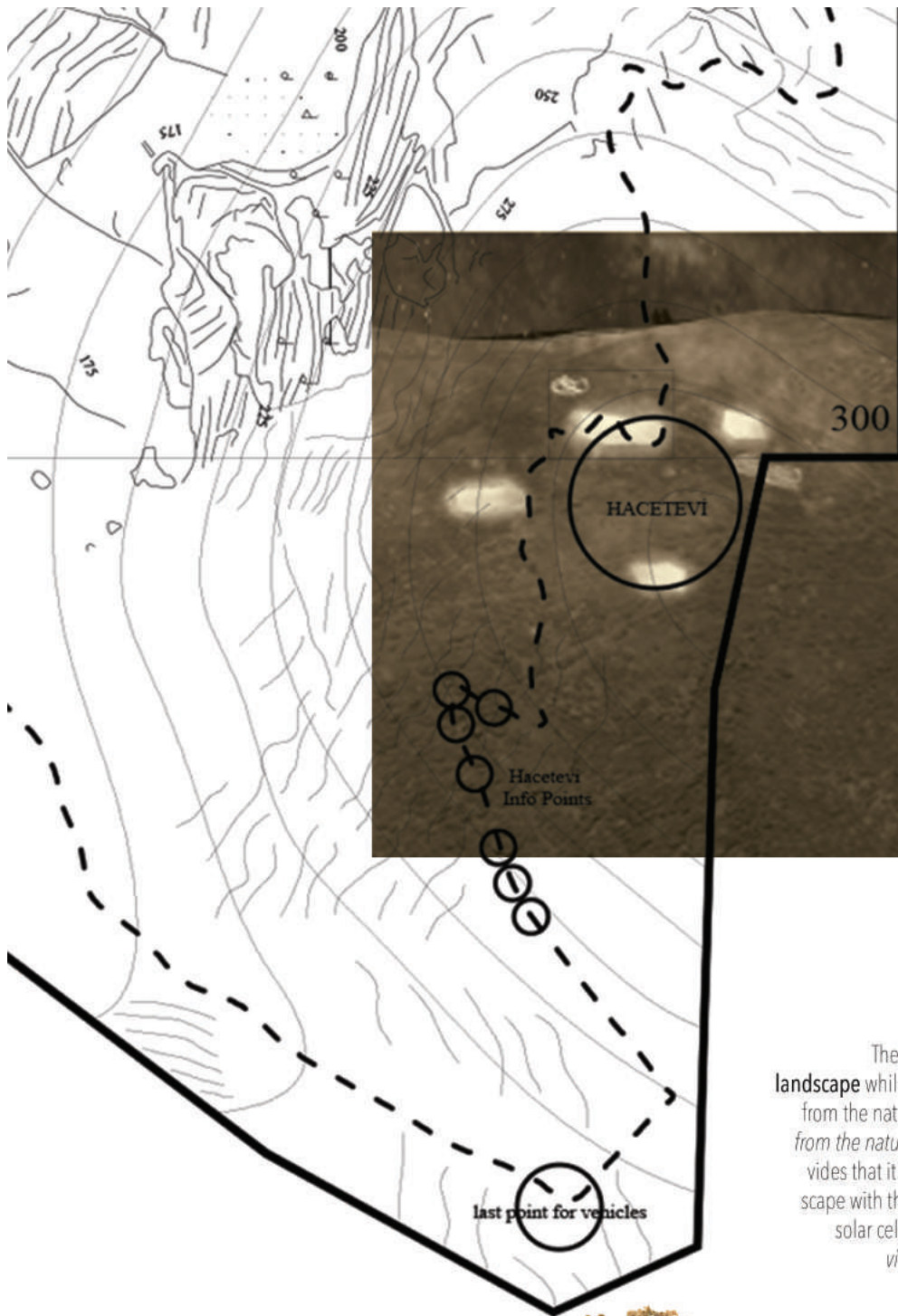


section a
scale: 1 / 50



section b
scale: 1 / 50

thePASSAGE



night view from the village

the Passage has two main design approach:

to protect and to take attention

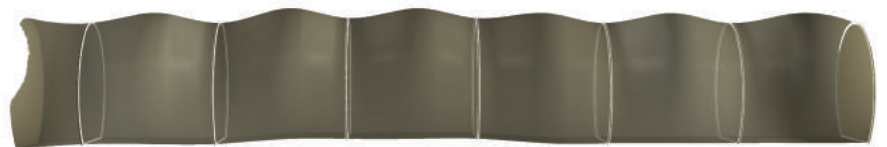
The Passage is designed to solve the **block of the landscape** while reaching to the Hacetevi. To protect the route from the nature, also *it was important not to isolate human from the nature*, that's why white **solar fabric** is used. It provides that it is still possible to see, touch or smell the landscape with the permeability of the veils. The fabric also has solar cells on it so the Passage would be *seen from the village at night* and this situation would create a **conscious and awareness** about Hacetevi.



section 1/50



elevation



elevation